



Lubratec®

Animal-Friendly Farm Management



Lubratec

Livestock environments for greater animal welfare

The Lubratec brand offers you first class solutions for animal friendly livestock farming. Lubratec products will help you to promote the well-being of your animals by optimising environmental conditions in barns, en-

couraging natural behaviour, reducing airborne infections and much more. The high-grade, robust and durable systems will also improve the efficiency and flexibility of your farming operations.



Promotion of animal-friendly livestock farming



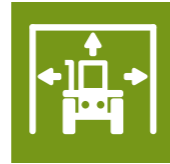
Creation of healthy environmental conditions in barns



Improvement of animal health



Encouragement of natural behaviour



Simplification of farm management

Lubratec Smart

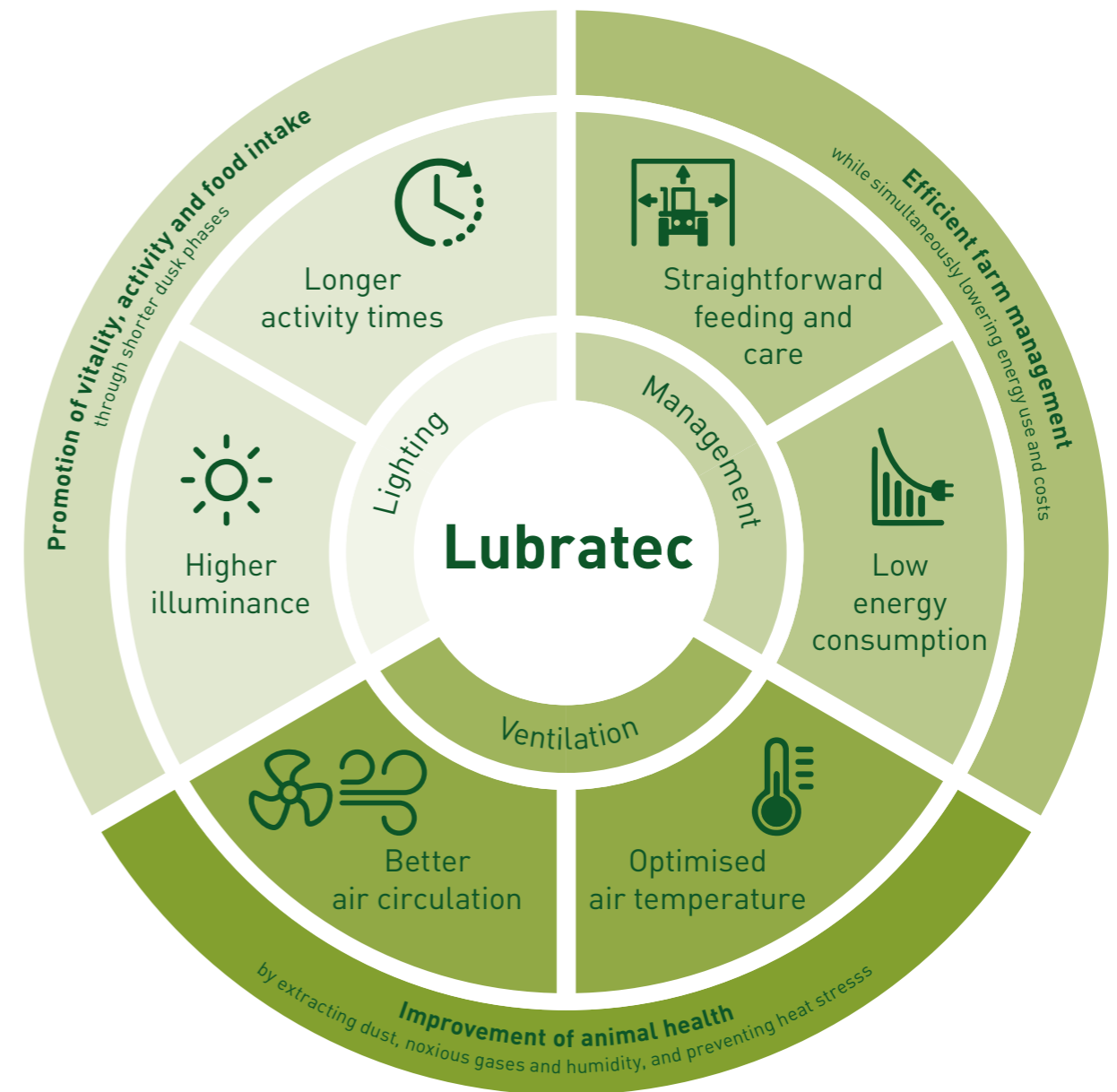
With Lubratec Smart, you can implement modern barn climate control technology through the intelligent networking of Lubratec ventilation and lighting products. Your advantage: You can control and regulate all products centrally. In the Lubratec Smart App, you always have an overall view of your products and the respective settings.

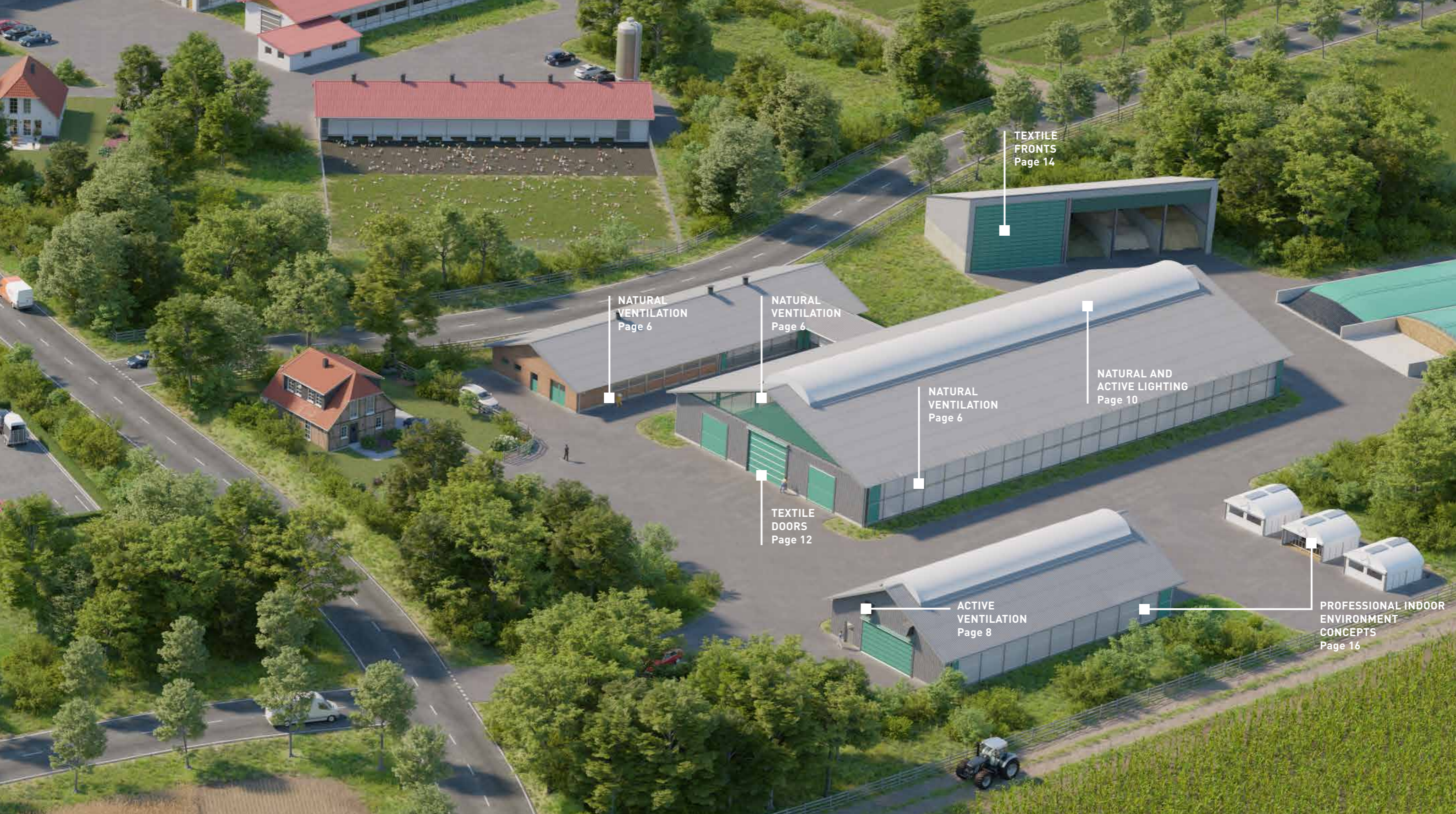
Look out for the Smart Ready logo in the brochure. This allows you to see at a glance which products can be integrated into the Lubratec Smart System. Thanks to the coordinated complete solution of hardware and software, you can be sure of an ideal stable climate at all times.



Animal friendly farming is a challenge – Lubratec is the solution

The Lubratec product portfolio features a wealth of professional solutions for cutting-edge, animal friendly livestock housing. Lubratec will help you to bring animal welfare and efficient barn management together.





Discover the world of Lubratec!

Competence in lightweight, climate controlled barns

By opting for Lubratec roll-up ventilation units, ventilation tubes, stretched systems, lift windows and fans, you will vastly improve the indoor conditions in your livestock buildings. A wide range of textile doors and fronts provide generous access for feeding and care while properly

protecting your livestock, goods and machinery. Lubratec light ridges and LED lamps quite literally bring light into the darkness. You too can profit from our expertise in the development of integral barn environment concepts.

Natural ventilation

Intelligent side ventilation systems

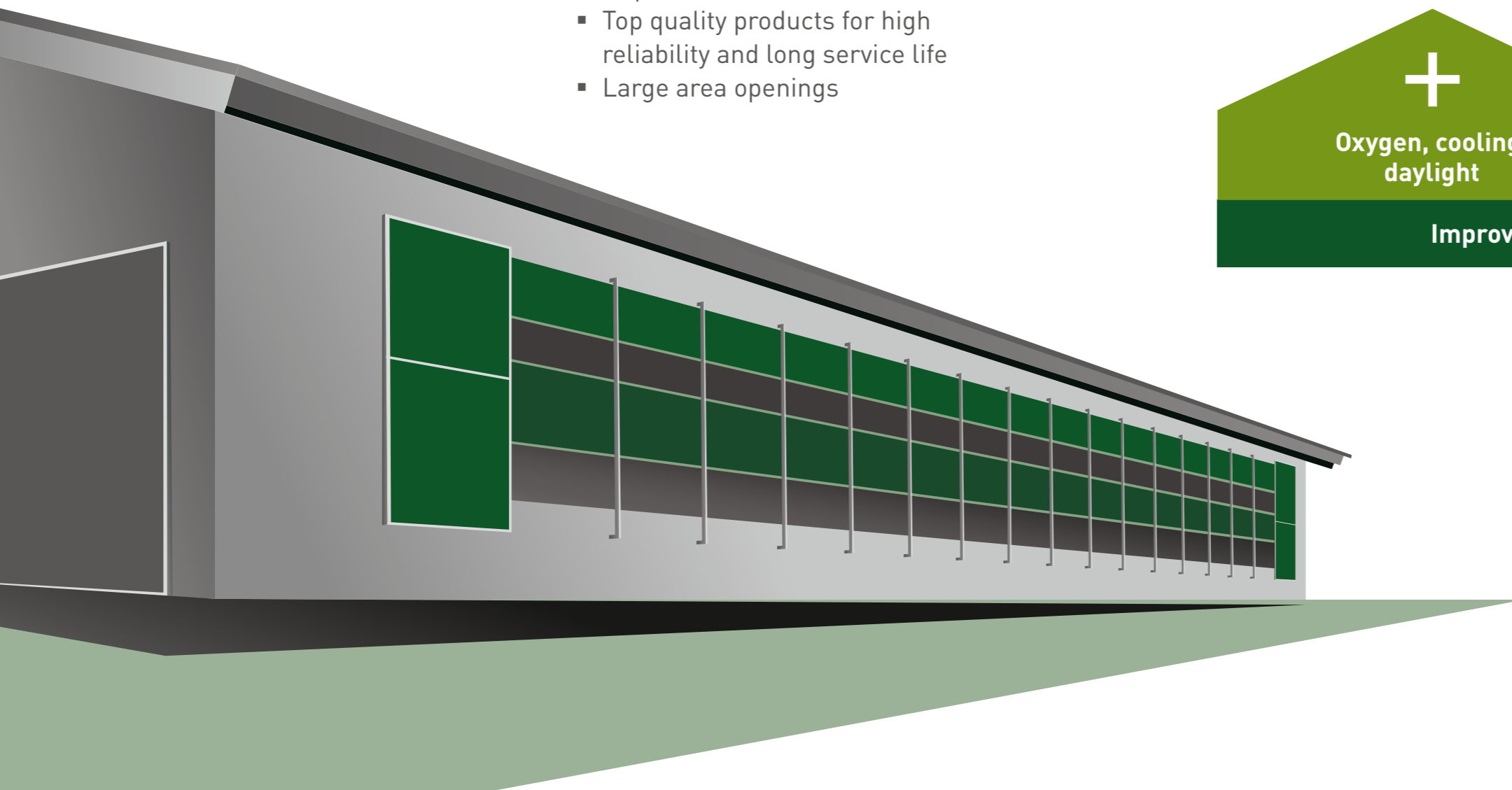
The Lubratec side ventilation systems admit light and air into your barns to create a healthy indoor environment.

All systems impress by their reliability, durability and visual appeal.



Benefits

- Efficient and flexible ventilation
- Enhanced animal welfare through a draught free fresh air supply
- Products tailored to your requirements
- Top quality products for high reliability and long service life
- Large area openings



Lubratec Roll-Up Ventilation



- Closely controlled ventilation (top, bottom and centre-opening units)
- Robust systems, also for large openings



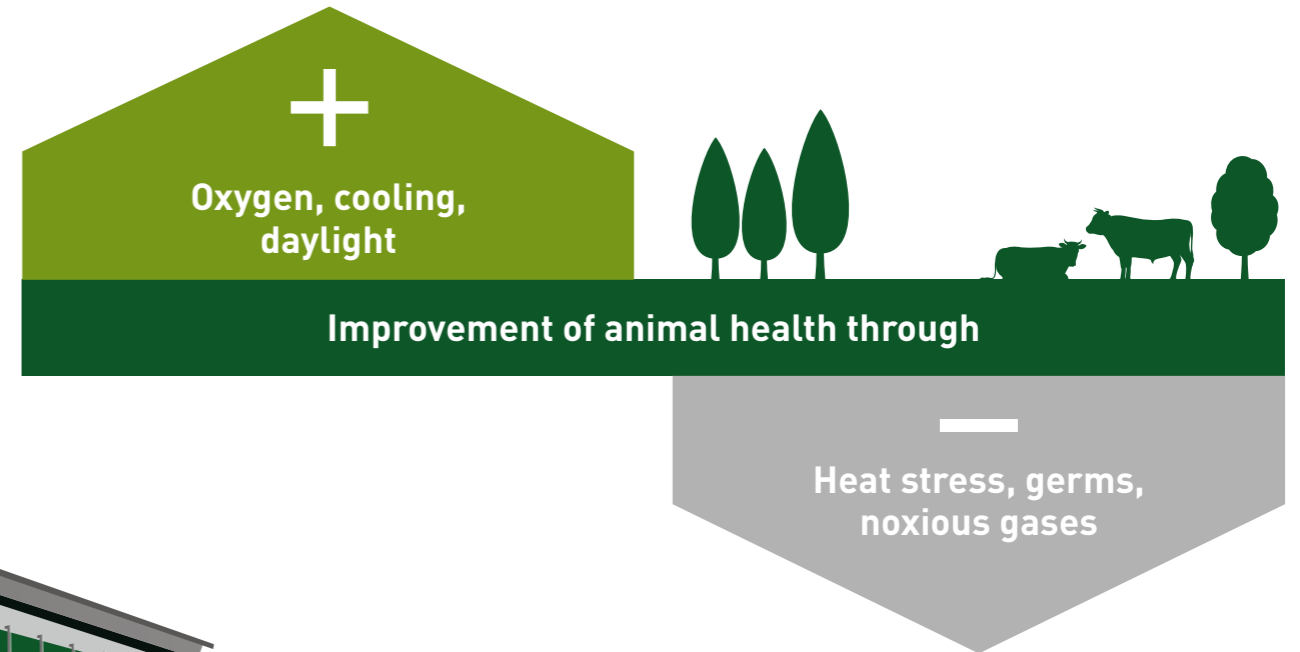
Lubratec Stretched Systems

- Weather protection, ventilation and generous daylighting
- Cost-effective and space-efficient



Lubratec Lift Windows

- With optional weatherstripping
- Long lasting, energy-efficient means of ventilation



Active ventilation

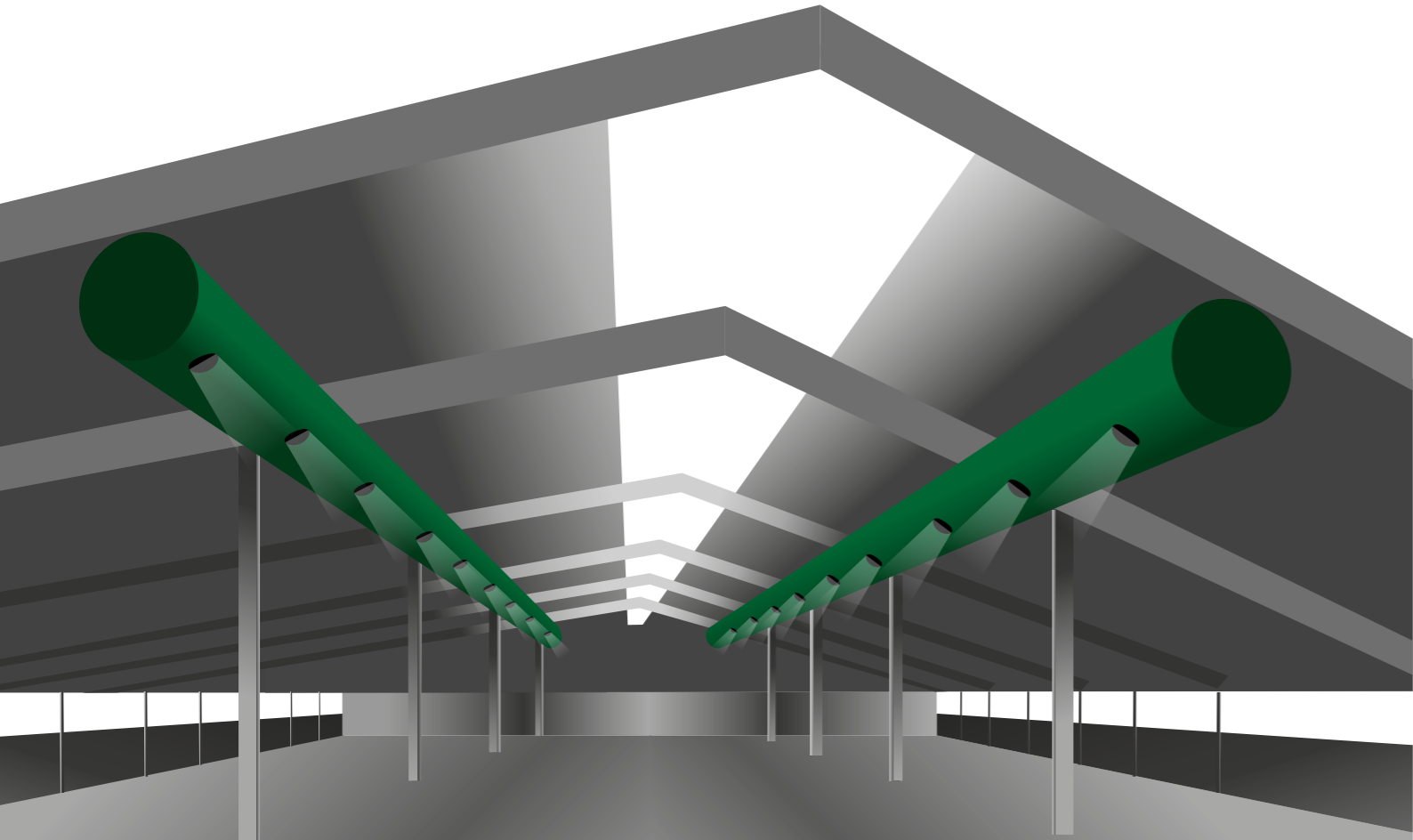
Fresh air supply with a cooling effect

High temperatures place an enormous burden on the metabolic system of livestock. HUESKER's active ventilation systems mitigate heat stress by means of targeted ventilation with a regulated cooling effect. Fresh outdoor air is actively drawn into the barn for uniform, precise-

on-controlled distribution. Wide area ceiling fans are used in conjunction with ventilation tubes designed on the basis of 3D simulations to deliver extra energy-efficient solutions for enhanced animal comfort.

+ Benefits

- Measurable heat stress reduction and healthier livestock
- Permanent, targeted ventilation
- Energy efficient precise cooling
- Better air circulation
- Lower medication and veterinary costs



Lubratec Tube Air



- Draught free and healthy fresh outdoor air
- Energy-efficient design based on physical computations



Lubratec Tube Cool



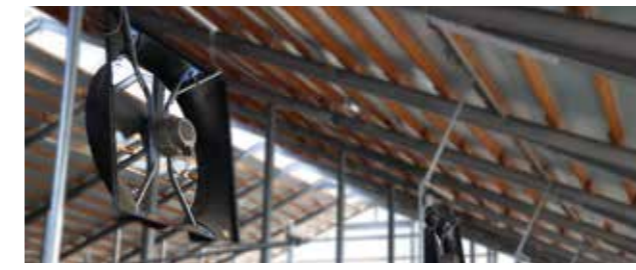
- Wind chill effect on backs of animals
- Greater productivity through constant food intake



Lubratec Ceiling Fans



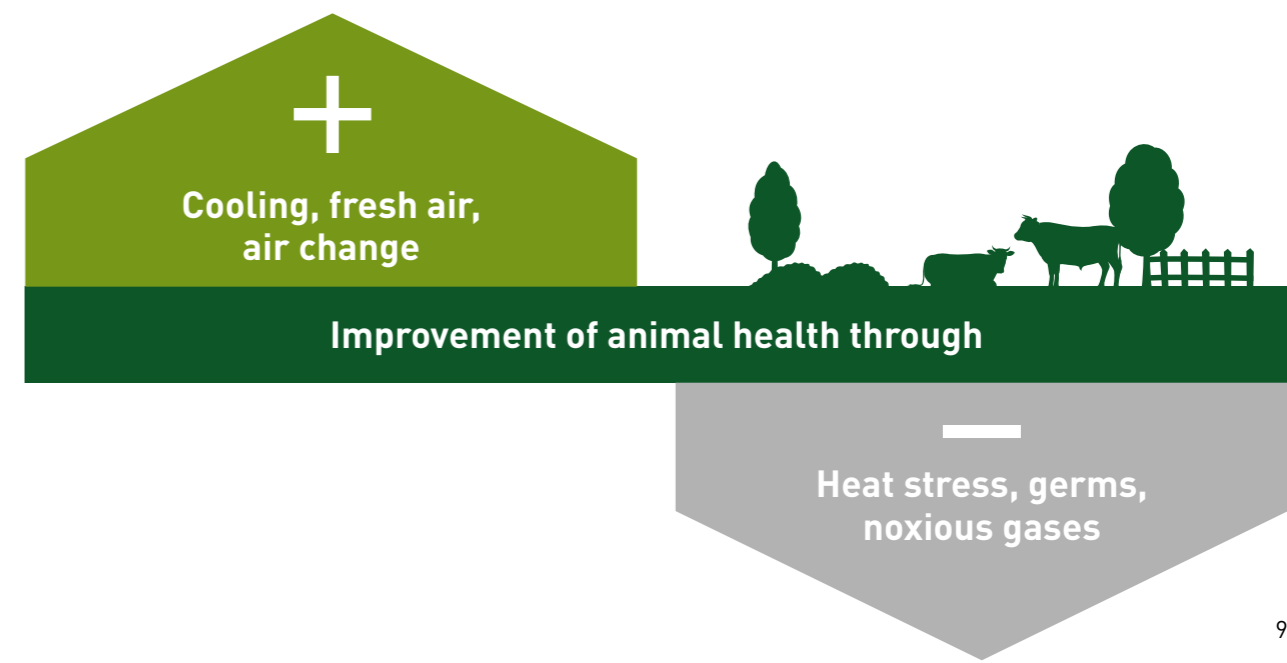
- Continuous, noise free air circulation
- Fresh air distribution throughout barn



Lubratec Axial Fans



- High air speed with cooling effect
- Fresh air intake from outside
- Can be integrated into the Lubratec Smart System



Natural and active lighting

Light promotes health and productivity

Light is life. It is vital to both humans and animals. Daylight and active lighting systems have a positive impact on the metabolic rate, hormone production and activity times of livestock. Lubratec enables you to offer your

livestock ample daylighting, even indoors, and control activity times through additional, energy-efficient LED lighting.



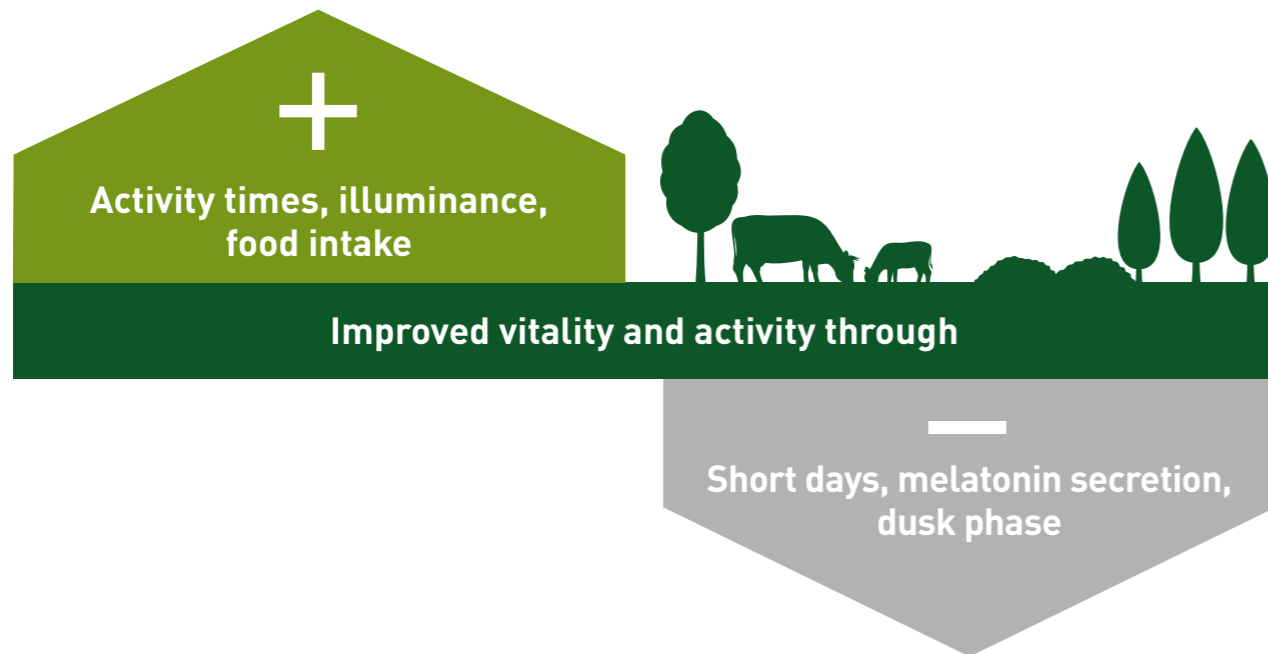
Lubratec Light Ridge

- Wide daylight diffusion throughout housing
- Air extraction through lateral ridge openings prevents heat accumulation



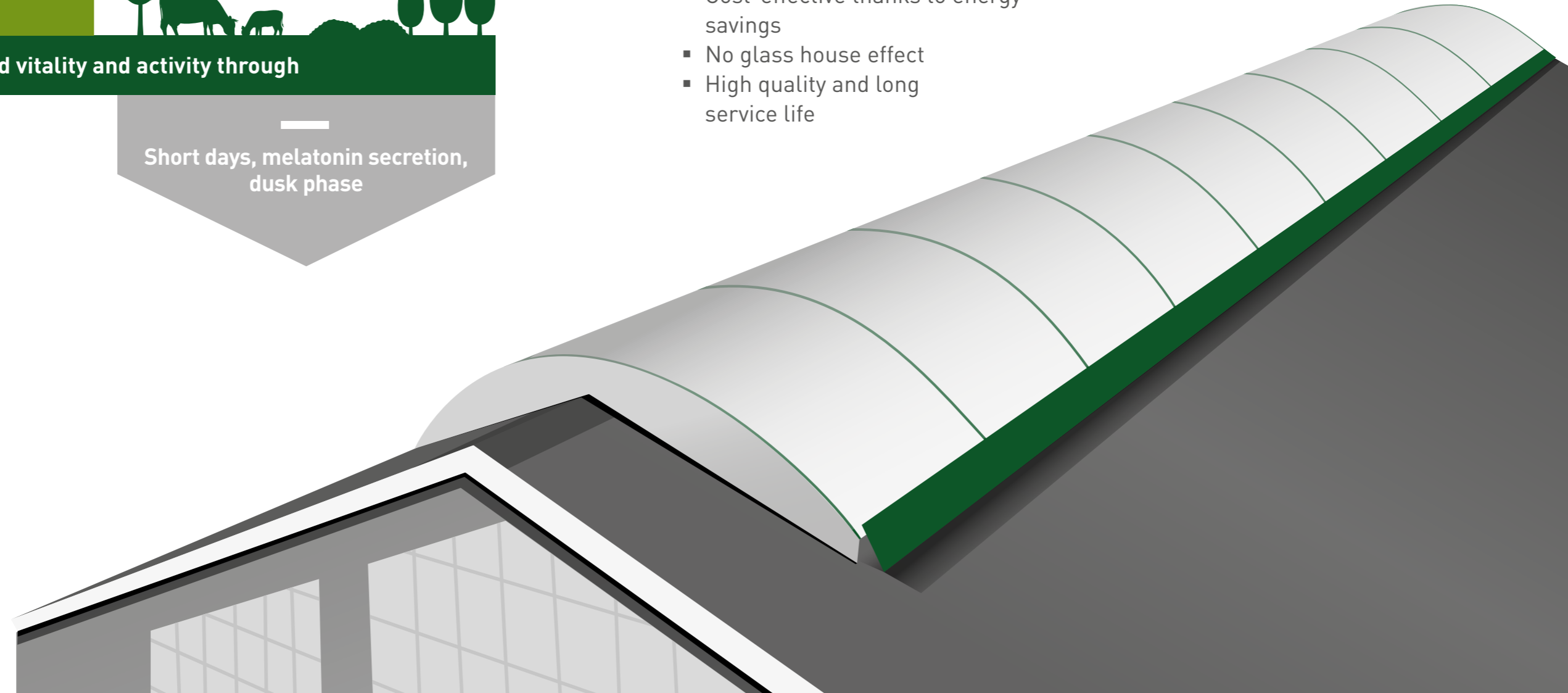
Lubratec LED

- Improved day/night rhythm
- Efficient, high-performance lighting



+ Benefits

- Constant maximum luminous efficacy
- Increase in livestock productivity
- Cost-effective thanks to energy savings
- No glass house effect
- High quality and long service life



Textile doors

Efficient barn management

By providing for large openings of up to 6 m in height and width, Lubratec textile doors simplify the management of farm buildings. The doors can be customised by choosing from various coloured textiles with an additional ventilation function. Vehicle entrances thus double up as a means

of improving the indoor environment and promoting animal comfort. While the robust design of Lubratec doors guarantees a long lasting solution, their state-of-the-art lightweight construction also offers financial benefits.



Benefits

- Efficient barn management
- Custom-fabrication (drive, fabric, colour)
- Tailored to your requirements
- Long service life thanks to high-quality manufacture
- Weather protection and ventilation



Lubratec Stabidoor

- Stabilising horizontal sections
- High wind load capacity



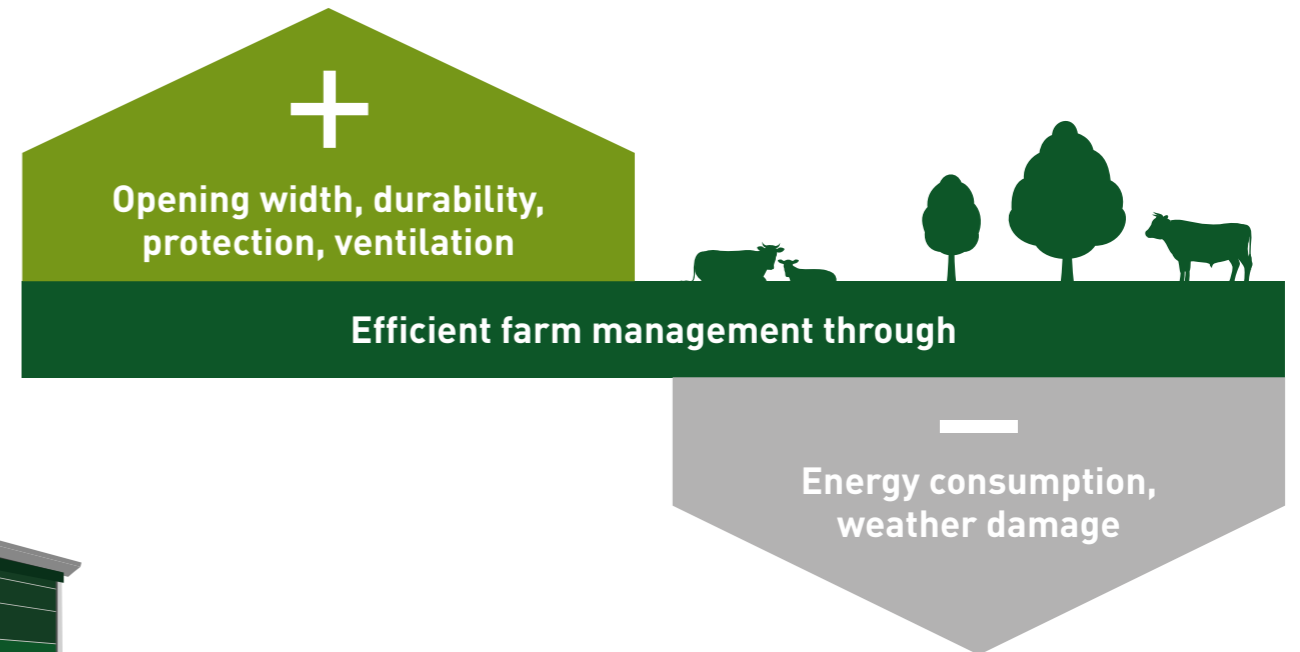
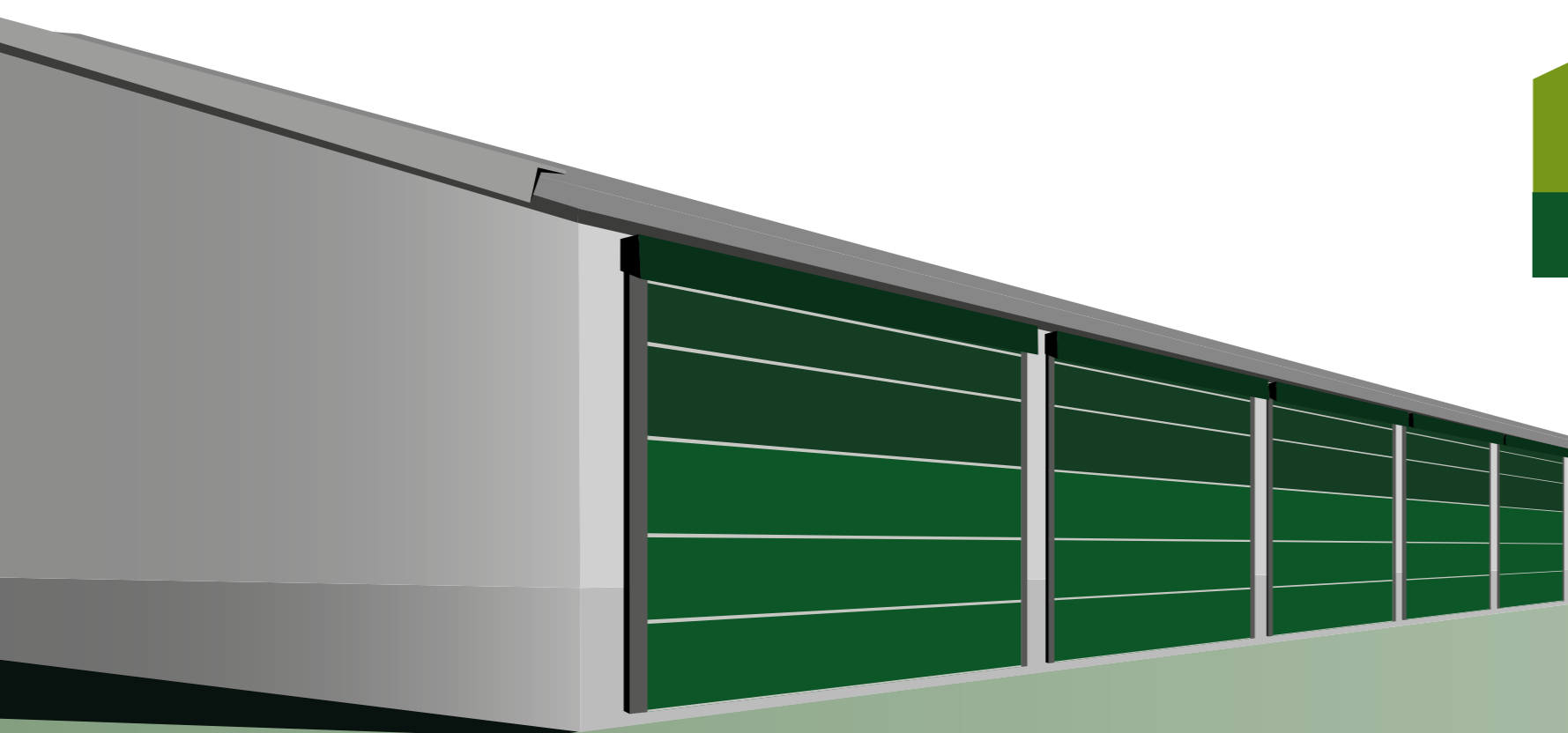
Lubratec Roller Blind Door

- Winds upwards onto central grooved roller
- High stability in windy conditions



Lubratec Rolldoor

- Without lateral guide rails
- Space-efficient, facilitating installation in tight spaces



Textile fronts

Custom-configured protection for large openings

Textile fronts combine the key benefits of weather protection and easy access for farming operations. They offer a simple and reliable means of sealing off large openings to fodder stores or machine sheds. A range of colours

and protective features are available that allow the lightweight fronts to be tailored to your needs. Securely tensioned, the fronts will ensure that your goods and property are kept safe from the elements.



Lubratec Folding Front

- Extra-large (10 × 20 m) opening size
- High wind load capacity



Lubratec Roller Blind Front

- High system stability
- Wide opening to optimise barn access and utilisation



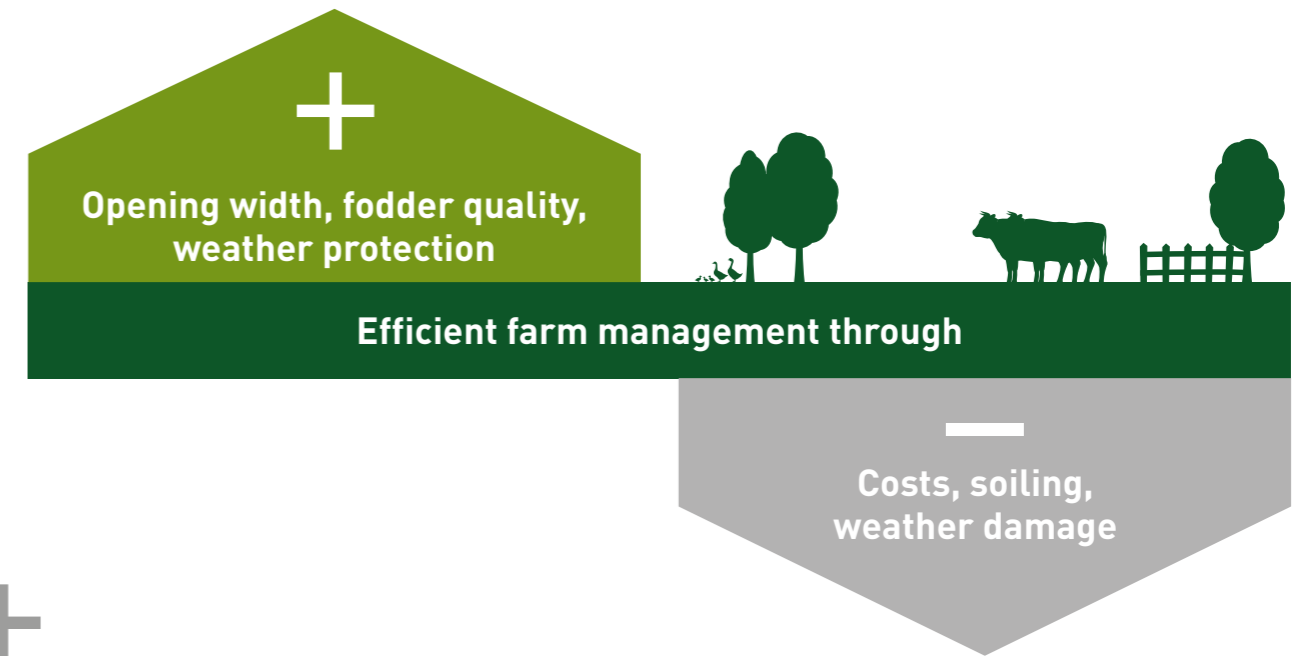
Lubratec Rollwall

- Dependable system for openings above wall plinth
- Draught free fresh air for livestock buildings



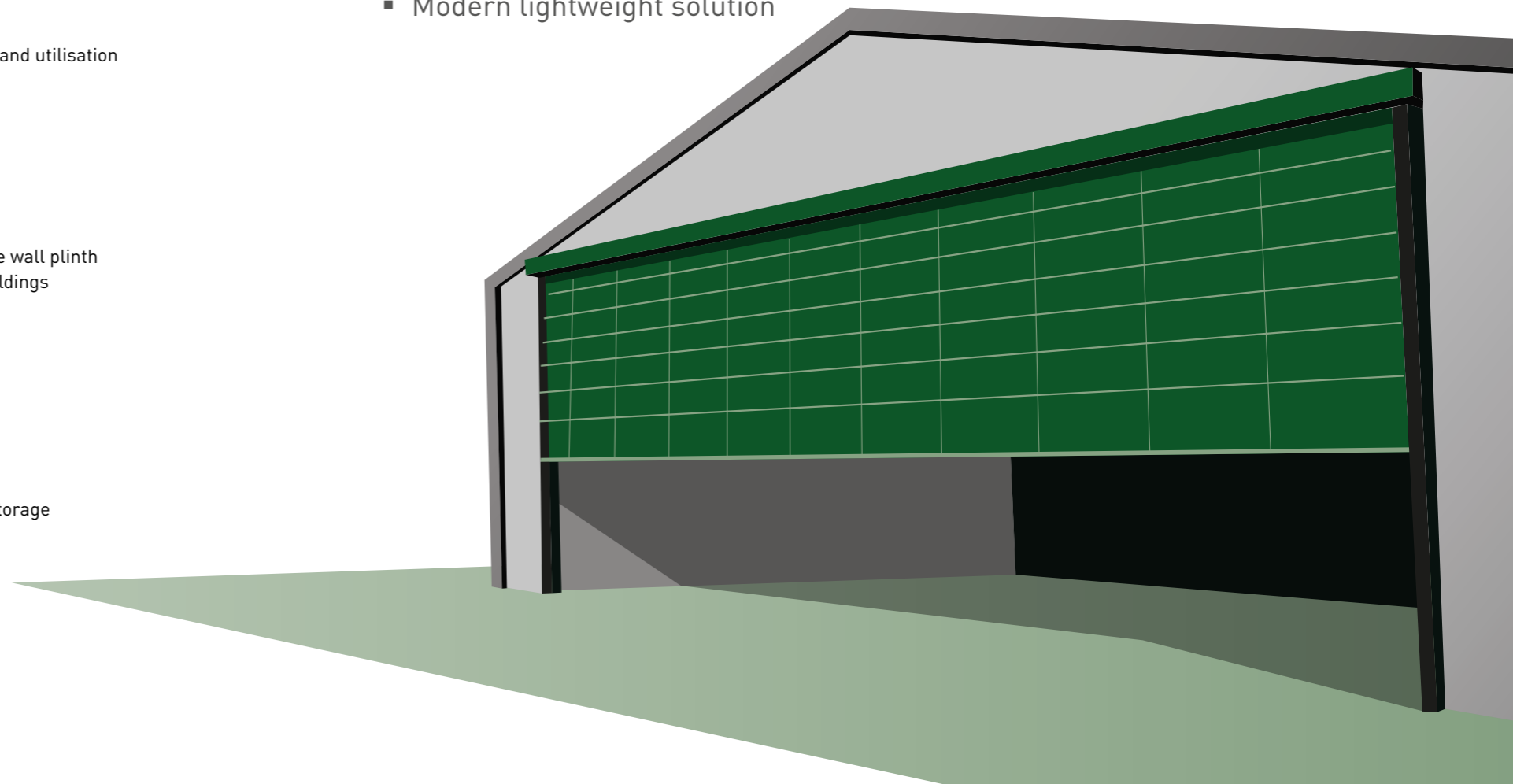
Lubratec Sliding Front

- Low space requirement
- Cost-effective solution for long term storage



+ Benefits

- Efficient access and utilisation
- Custom-fabrication (drive, fabric, colour)
- Long service life thanks to high-quality manufacture
- Weather protection and ventilation
- Modern lightweight solution



Professional indoor environment concepts

Lubratec Concept as an all-round solution

If you are thinking about investing in a new livestock building, then why not opt for a combination of all the various Lubratec solutions? Developed in collaboration with experienced veterinary surgeons and farmers, the Lubratec

concept offers an uncomplicated solution for meeting all your needs: climate-controlled barns, specially designed to enhance animal welfare and simplify management.

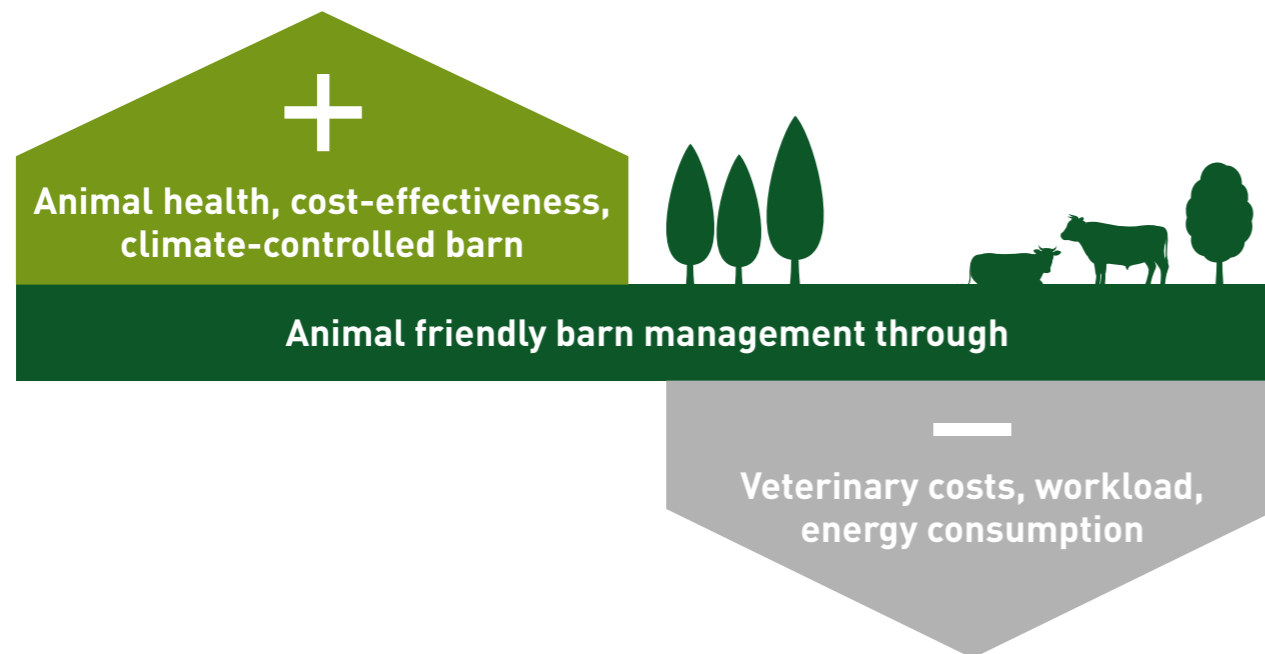


Lubratec Concept

- Integral indoor environment concept to safeguard animal health
- Perfect interaction of lighting and ventilation systems, control options and building architecture

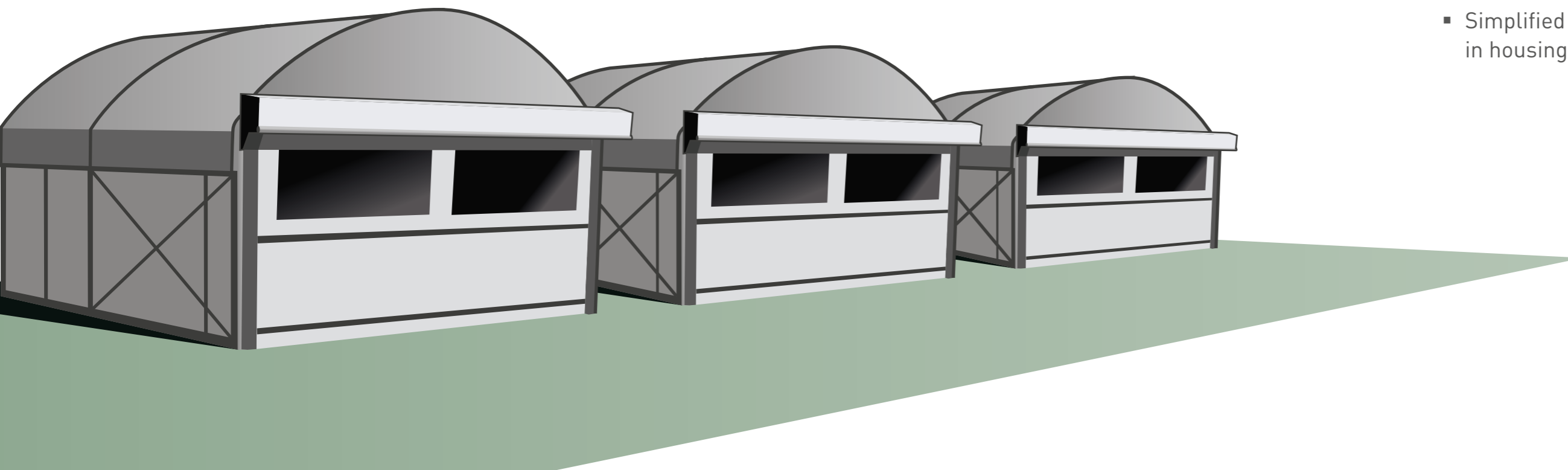
Lubratec Mobile Barn

- Relocatable solution for outdoor calf rearing
- Intelligent combination of high-grade construction, maximum hygiene and healthy indoor environment



+ Benefits

- Permanently healthy indoor environment
- Intelligent co-ordination of all Lubratec systems
- Animal friendly use of natural light and ventilation sources
- Automatic energy efficient control
- Simplified farming operations, in housing and outdoors



HUESKER

The “know how” behind the Lubratec systems

Building on its 150 year plus corporate history, HUESKER boasts a long and successful track record of innovation in the agricultural sector. We offer wide-ranging solutions in the fields of animal welfare, agricultural technology, bio-

gas, liquid manure and silage protection. Described below are our key service offerings that are designed to simplify your work. Please feel free to talk to us about your needs and let our experts assist you with your requirements.

We will assist you in developing a feel-good package for your animals and yourself.

Production

We will fabricate and assemble your Lubratec solution at our production sites in Germany to give you the full benefit of our 150 year-plus experience in textile manufacturing. Our products are specially designed for reliability and durability so that our customers can focus their full attention on their livestock.

Customisation

Custom-fabrication of your products is the centrepiece of our service portfolio. Your job is to specify the size, colour and technical performance. Our job is to deliver the solution. This way, you receive a product which meets your requirements and expectations.

Digitisation

Smart Farming for maximum animal welfare. With Lubratec Smart, your Lubratec ventilation and lighting products are intelligently networked and controlled. Thanks to the coordinated complete solution of hardware and software, you can be sure of an ideal barn climate at all times.

Installation

To guarantee that everything functions properly to provide you and your animals with the full benefits of Lubratec from day one, all products are installed by experienced operatives. Our on-site service can also be used to arrange for expert instruction in the operation of our various systems.

Maintenance service

On request, HUESKER will also perform the annual maintenance on your Lubratec products to ensure that they enjoy a particularly long and trouble-free service life. The time you save on upkeep will then be free for you to spend with your animals.

Consulting and design

With a wealth of experience gathered on numerous projects, our experts will be delighted to advise you on the design of your new-build or refurbishment scheme. If you so wish, we will liaise directly with your architect to ensure the entire design process runs smoothly.



Lubratec® is a registered trademark of HUESKER Synthetic GmbH.
HUESKER Synthetic is certified to ISO 9001 and ISO 50001.



HUESKER Synthetic GmbH

Fabrikstrasse 13-15
48712 Gescher, Germany
Phone: + 49 (0) 25 42 / 701 - 0
Fax: + 49 (0) 25 42 / 701 - 499
E-mail: techtex@HUESKER.de
Web: www.HUESKER.com

Location Duellen
Im Broemken 5
48249 Duellen, Germany
Phone: + 49 (0) 25 94 / 89 27 - 0
Fax: + 49 (0) 25 94 / 89 27 - 890
E-mail: stallklima@HUESKER.de

HUESKER
Ideen. Ingenieure. Innovationen.